

Flamaster

www.flamasterusa.com

Project name : _____

Location : _____

Item# : _____ QTY : _____

Model# : _____

Electric Floor Fryer

Model: FLM-EF50



- 50 lbs oil capacity, 15.26kW heating elements.
- Frying area 14" x 16.7" (357 x 425 mm).
- Snap-action thermostat, 200°F - 400°F (93°C - 204°C) temperature range.
- 1-1/4" (32 mm) full port drain valve.
- 6" (153 mm) adjustable stainless steel legs with 1 1/2" adjustment.
- This appliance is manufactured for commercial installation only, not intended for home use.
- For use only on non-combustible floors.
- Require a 6" clearance at both side and rear adjacent to combustible construction.
- An adequate ventilation system is required for Commercial Cooking Equipment.
- 208V/3P (no cord or plug provided, connect power supply at rear Junction Box.)

Toll Free: +1(800)373-8699

flamaster@chefmindgroup.com

Address: 1189S Jellick Ave,
City of Industry, CA 91748

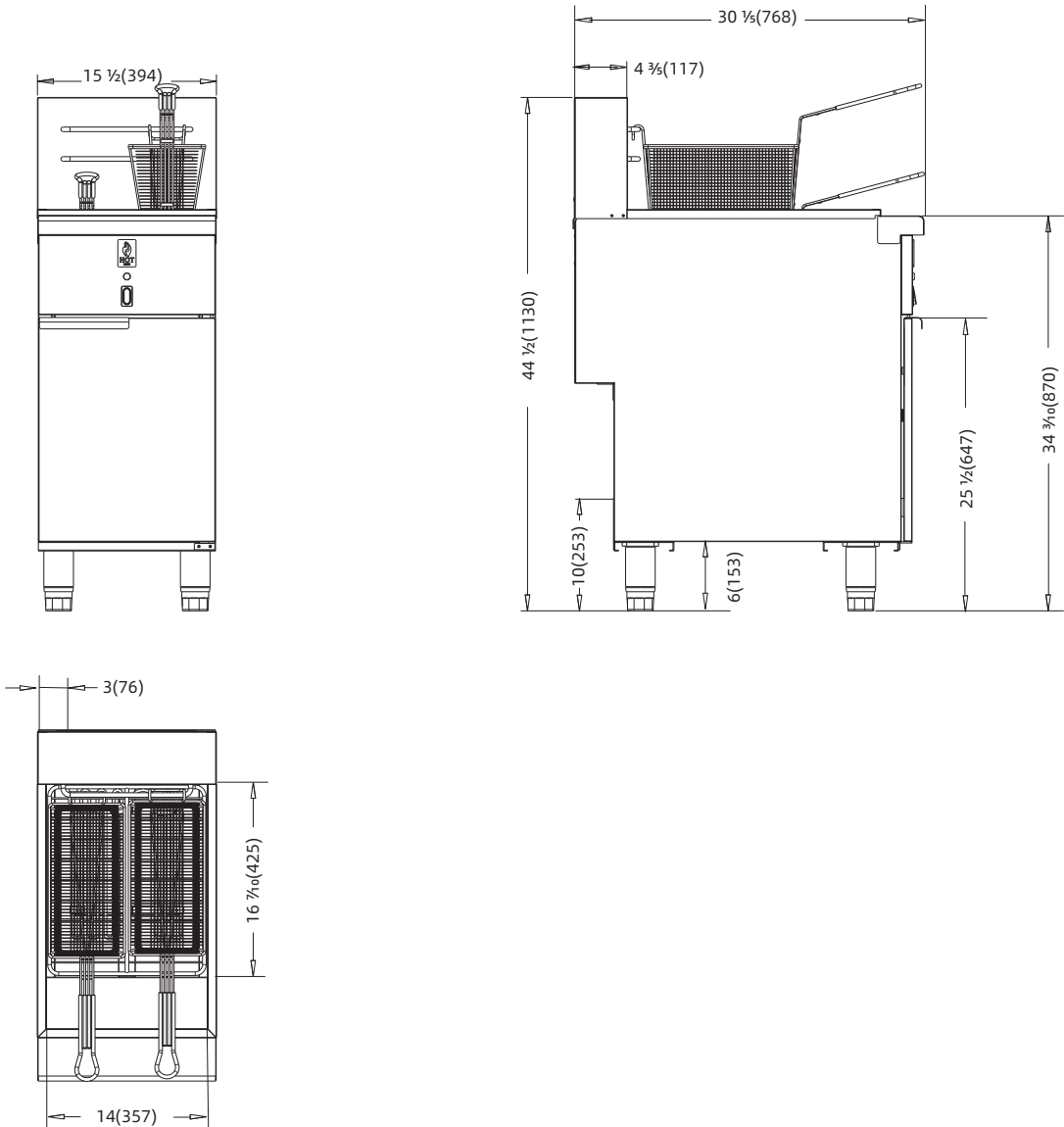


Electric Floor Fryer

Model: FLM-EF50

•ETL c & us, ETL Sanitation listed

MODEL	VOLTS PHASE	WATTS (KW)	AMPS	OIL CAPACITY	OVERALL DIMENSIONS	NET WEIGH	PACKAGE SIZE	Shipping Weight
FLM-EF50	208V-3P	15.26	43A	50 lbs (27L)	15½ x 30½ x 44½	110 lbs.(50 kg)	16½ x 32¾ x 33	130 lbs.(59 kg)



1 YEAR PARTS WARRANTY

