

Flamaster

www.flamasterusa.com

Project name : _____

Location : _____

Item# : _____ QTY : _____

Model# : _____

Gas Hot Plate

Model: FLM-HP24-M



- Alpha brass control components.
- Stainless steel front, ledge, sides.
- Double wall insulated sides.
- Heavy-duty cast iron grates remove easily and safely.
- Aeration bowl in each grate to retain heat to each pot/pan.
- 25,000BTU (7.3KW)/Burner.
- Octagonal cast iron burners.
- Standing pilot light for each burner.
- Adjustable pilot lights.
- Adjustable stainless steel legs, non-skid feet.
- Full length seamless drip pan, easy to remove and clean.
- Flame failure protection options.
- One year parts and labor warranty.

Toll Free: +1(800)373-8699

flamaster@chefmindgroup.com

Address: 1189S Jellick Ave,
City of Industry, CA 91748

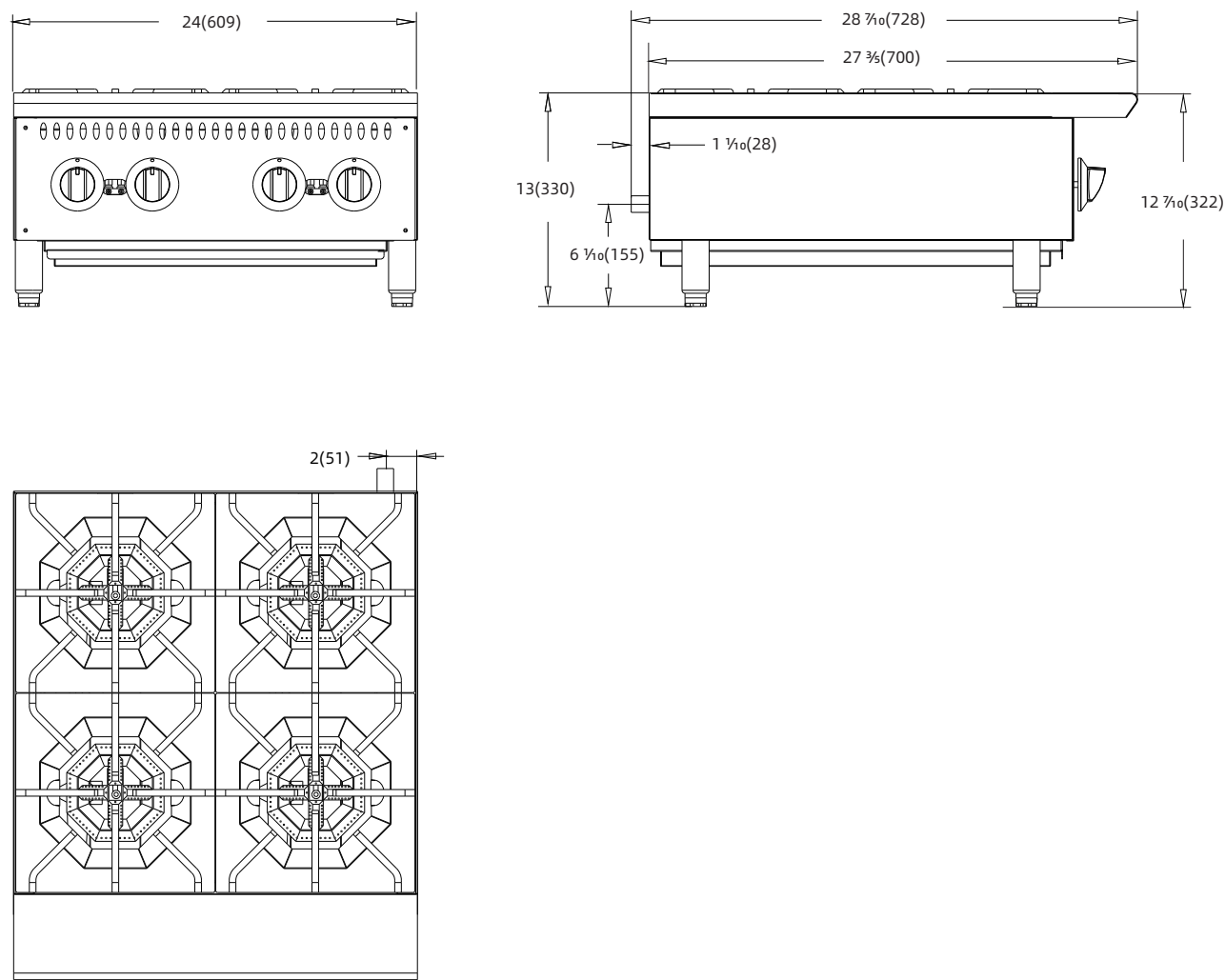


Gas Hot Plate

Model: FLM-HP24-M

•CSA design certified NSF listed

| MODEL | GAS TYPE | BURNERS | TOTA BTU | OVERALL DIMENSIONS | NET WEIGHT | PACKAGE SIZE | Shipping Weight |
|------------|------------------------------|---------|----------|--------------------|------------------|--------------------------|-----------------|
| FLM-HP24-M | Natural Gas / Liquid Propane | 4 | 100,000 | 24 x 28 7/16 x 13 | 96 lbs.(43.5 kg) | 27 1/2 x 33 1/2 x 17 1/4 | 137 lbs.(62 kg) |



1 YEAR PARTS WARRANTY

