

Flamaster

www.flamasterusa.com

Project name: _____

Location: _____

Item#: _____ QTY: _____

Model#: _____

Gas Range

Model: FLM-R24



- Alpha brass control components.
- Stainless steel front, back riser, lift off shelf.
- Heavy-duty cast iron grates with aeration bowl.
Standing pilot light for individual burners.
- Manual gas control.
- Manual gas control.
- 33,000BTU (9.7KW) Static oven.
- Oven interior side guides and bottom porcelain coated.
- Oven thermostat adjusts from 200°F -500°F (93°C -260°C).
- Oven with 2 racks, 3 positions.
- Flue located on back of unit for ample ventilation.
- Easy to remove full width crumb tray.
- Range is fully serviceable from the front.
- Stainless steel legs standard, casters options.
- One year parts and labor warranty.*

Toll Free: +1(800)373-8699
flamaster@chefmindgroup.com
Address: 1189S Jellick Ave,
City of Industry, CA 91748



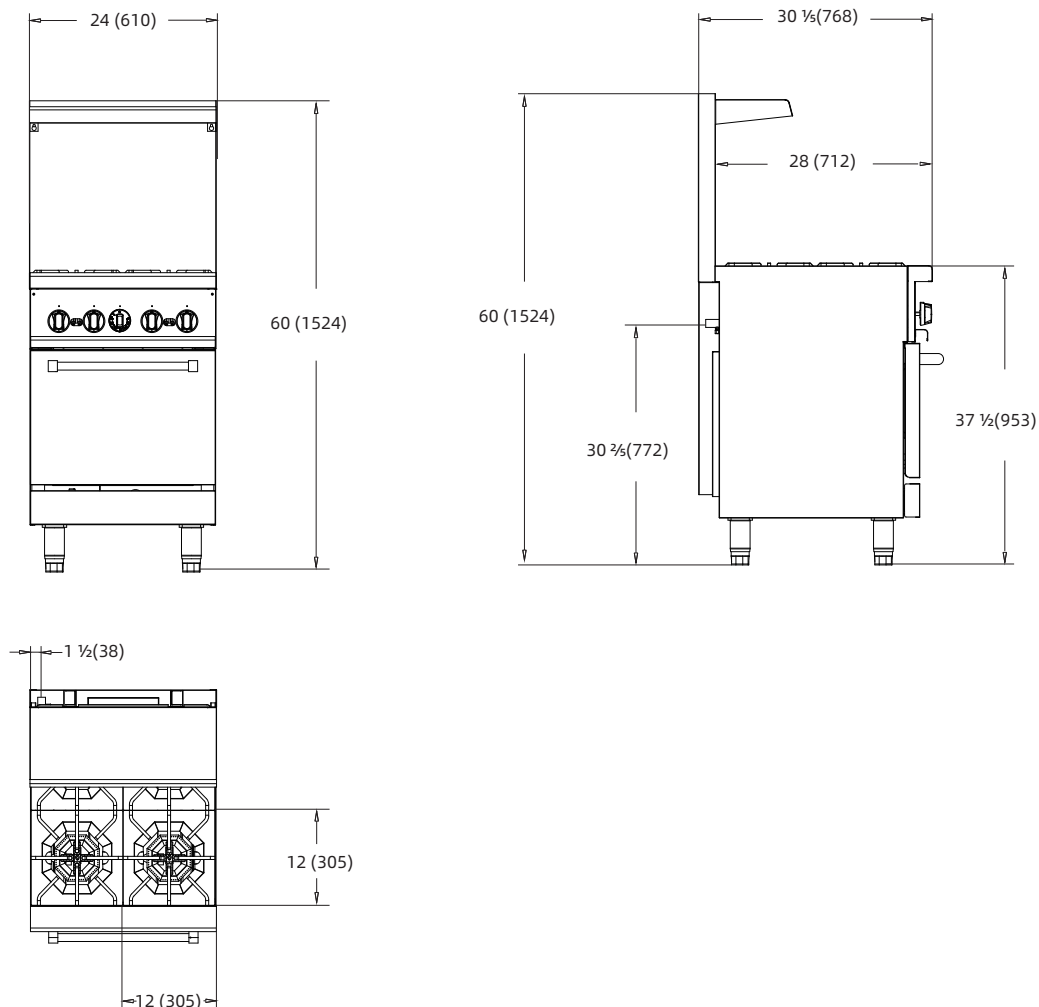
Gas Range

Model: FLM-R24

•CSA Design Certified, NSF Listed

MODEL	GAS RANGE DESCRIPTION	WIDTH	TOTAL BURNERS	
			TOP OPEN BURNERS	Bottom Oven
FLM-R24	24" Range – 4 top burners	24"	4	1

OVERALL DIMENSIONS	TOTAL BTU		STANDARD OVEN CAVITY MEASURES	NET WEIGHT	SHIPPING DIMENSIONS	SHIPPING WEIGHT
	NG	LP				
24 X31½ X60	153,000	136,000	20 X22½ X13¾	268 lbs.(122 kg)	27¾ X36½ X43¾	354 lbs.(161 kg)



1 YEAR PARTS WARRANTY (NOT FOR RESIDENTIAL USE)



CHEFMIND GROUP INC.

SPECIFICATIONS SUBJECT TO CHANGE WITHOUT NOTICE