

Flamaster

www.flamasterusa.com

Project name: _____

Location: _____

Item#: _____ QTY: _____

Model#: _____

Gas Range

Model: FLM-R36



- *Alpha brass control components.*
- *Stainless steel front, back riser, lift off shelf.*
- *Heavy-duty cast iron grates with aeration bowl.*
Standing pilot light for individual burners.
- *Manual gas control.*
- *30,000BTU(8.8KW)/Burner.*
- *33,000BTU (9.7KW) Static oven.*
- *Oven interior side guides and bottom porcelain coated.*
- *Oven thermostat adjusts from 200°F -500°F (93°C -260°C).*
- *Oven with 2 racks, 3 positions.*
- *Flue located on back of unit for ample ventilation.*
- *Easy to remove full width crumb tray.*
- *Range is fully serviceable from the front.*
- *Stainless steel legs standard, casters options.*
- *One year parts and labor warranty.**

Toll Free: +1(800)373-8699
flamaster@chefmindgroup.com
Address: 1189S Jellick Ave,
City of Industry, CA 91748



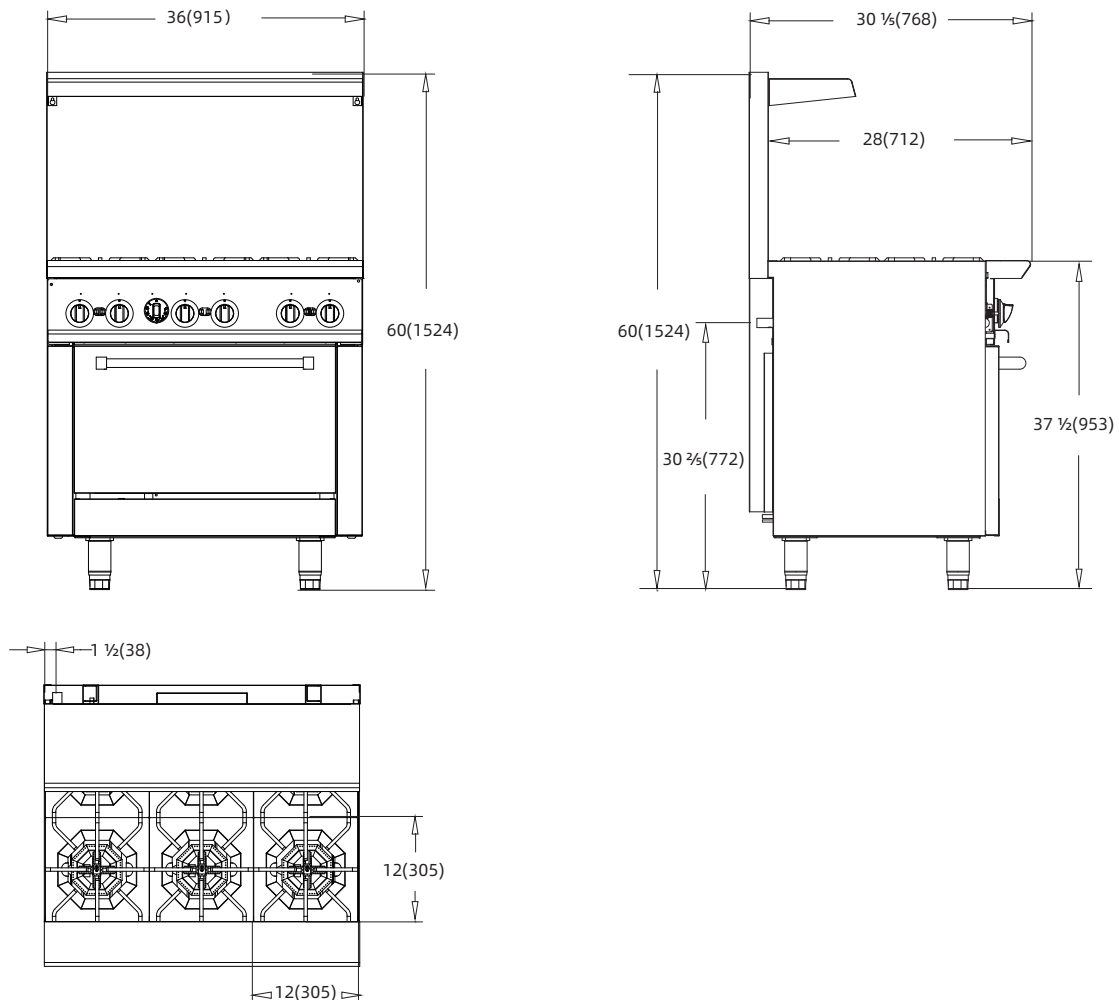
Gas Range

Model: FLM-R36

•CSA Design Certified, NSF Listed

MODEL	GAS RANGE DESCRIPTION	WIDTH	TOTAL BURNERS	
			TOP OPEN BURNERS	Bottom Oven
FLM-R36	36" Range - 6 top burners	36"	6	1

OVERALL DIMENSIONS	TOTAL BTU		STANDARD OVEN CAVITY MEASURES	NET WEIGHT	SHIPPING DIMENSIONS	SHIPPING WEIGHT
	NG	LP				
36 X 31 $\frac{3}{8}$ X 60	213,000	190,000	26 X 22 $\frac{1}{2}$ X 13 $\frac{3}{4}$	364 lbs.(165 kg)	39 $\frac{3}{8}$ X 36 $\frac{3}{8}$ X 43 $\frac{7}{16}$	467 lbs.(212 kg)



1 YEAR PARTS WARRANTY (NOT FOR RESIDENTIAL USE)



CHEFMIND GROUP INC.

SPECIFICATIONS SUBJECT TO CHANGE WITHOUT NOTICE