

Flamaster

www.flamasterusa.com

Project name: _____

Location: _____

Item#: _____ QTY: _____

Model#: _____

Gas Range

Model: FLM-R36



- *Alpha brass control components.*
- *Stainless steel front, back riser, lift off shelf.*
- *Heavy-duty cast iron grates with aeration bowl.*
Standing pilot light for individual burners.
- *Manual gas control.*
- *30,000BTU(8.8KW)/Burner.*
- *33,000BTU (9.7KW) Static oven.*
- *Oven interior side guides and bottom porcelain coated.*
- *Oven thermostat adjusts from 200°F -500°F (93°C -260°C).*
- *Oven with 2 racks, 3 positions.*
- *Flue located on back of unit for ample ventilation.*
- *Easy to remove full width crumb tray.*
- *Range is fully serviceable from the front.*
- *Stainless steel legs standard, casters options.*
- *One year parts and labor warranty.**

Toll Free: +1(800)373-8699

flamaster@chefmindgroup.com

Address: 1189S Jellick Ave,
City of Industry, CA 91748



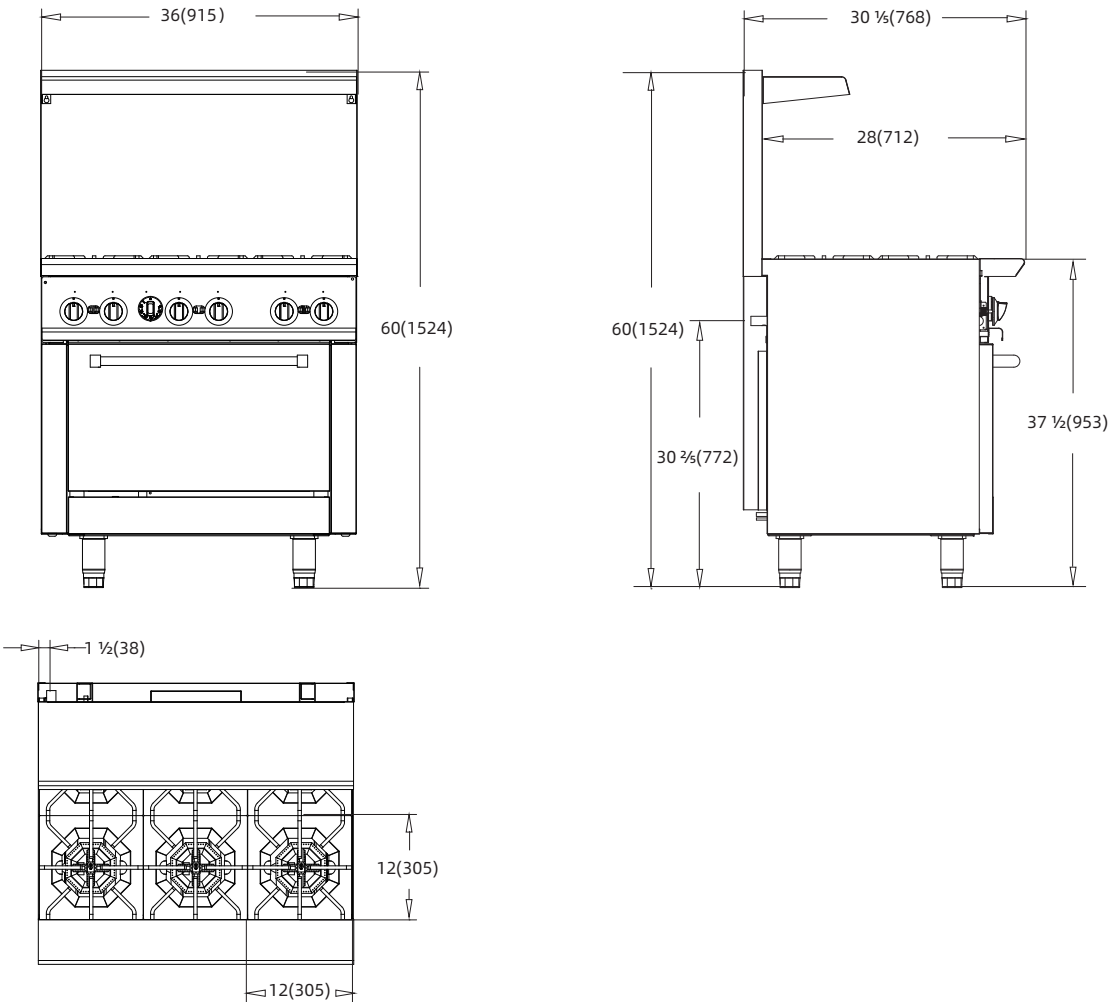
Gas Range

Model: FLM-R36

•CSA design certified NSF listed

MODEL	GAS RANGE DESCRIPTION	WIDTH	TOTAL BURNERS	
			TOP OPEN BURNERS	Bottom Oven
FLM-R36	36" Range – 6 top burners	36"	6	1

MODEL	TOTAL BTU		OVERALL DIMENSIONS	NET WEIGHT	SHIPPING DIMENSIONS	Shipping Weight
	NG	LP				
FLM-R36	213,000	190,000	36 X 31½ X 60	364 lbs.(165 kg)	39½ X 36¾ X 43¾	467 lbs.(212 kg)



1 YEAR PARTS WARRANTY

