

28 15/16" STANDARD-Top Salad Sandwich Prep Table

Model: PLM-S29S



- Tested to NSF Standard 7 requirements for open food storage.
- Interior cabinet is full stainless steel, floor with coved corners.
- Exterior cabinet construction consists of full stainless steel front and sides.
- 1/6 size 4" clear Lexan pans included.
- Added space allows for extra rows of pans.
- Full length, heavy-duty 5/8" thick cutting board is included.
- Electronic thermostat with external digital LED display for accurate control and easy reading.
- Large fan motors and blades for more efficient air flow ensuring faster temp recovery times.
- Condensate hot gas loop built into condensate pan for energy saving evaporation of excess condensate water.
- Efficient condensate hot gas loop built into condensate pan for energy saving evaporation of excess condensate water.
- Self contained capillary tube system using environmentally friendly R290 Hydrocarbon gas.
- Vaulted self closing doors that remain open at 90 degrees.
- Magnetic door gaskets are removable and replaceable without tools.
- Easy to mount plate casters (2 locking) are standard with all units.

Toll Free: +1 (800) 373-8699
polarman@chefmindgroup.com
Address: 1189S Jellick Ave,
City of Industry, CA 91748



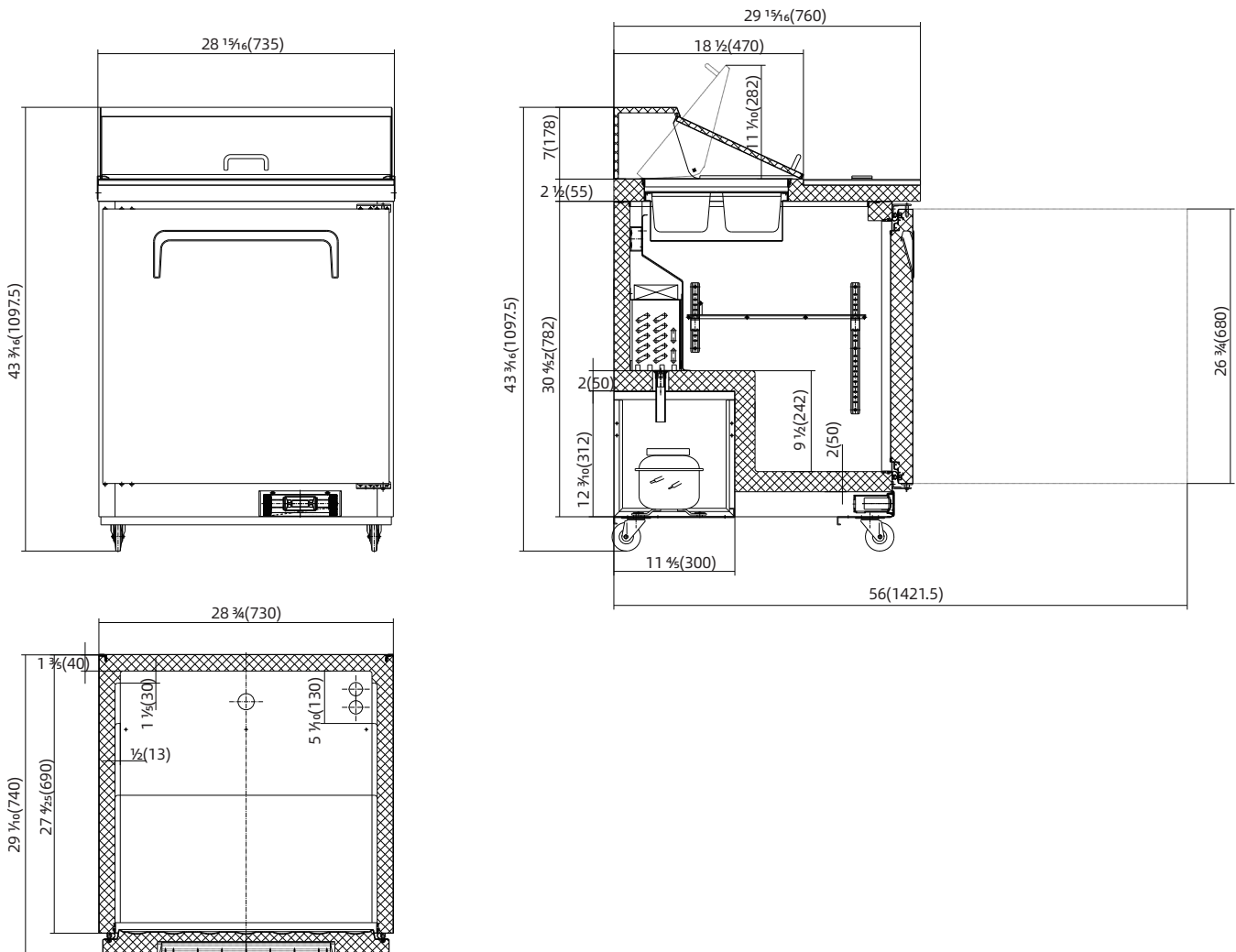
28 15/16" STANDARD-Top Salad Sandwich Prep Table

Model: PLM-S29S

•Certified to ANSI/NSF Standard 7



MODEL	EXTERNAL DIMENSION inch	V/Hz/Ph	STORAGE CAPACITY Cu-ft	NUMBER OF DOOR	TEMPERATURE	REFRIGERANT	HP	AMPS	CORD LENGTH	NEMA PLUG	SHIPPING WEIGHT (lbs.)
PLM-S29S	28 15/16 x 29 15/16 x 43 3/16	115V/60Hz/1	7	1	33°F-41°F	R290	1/3	3	8'	5-15P	225



2 YEAR PARTS WARRANTY
5 YEAR COMPRESSOR WARRANTY



CHEFMIND GROUP INC.

SPECIFICATIONS SUBJECT TO CHANGE WITHOUT NOTICE